



BSC
system

MOBILE STAGE PLATFORM

BSC Light



TÜV®
Verified product
No: 0000108986
certyfikat.tuv-nord.pl



Stage platform BSC Light – product card

www.bscsystem.pl

(+48) 22 301 07 08
info@bscsystem.pl

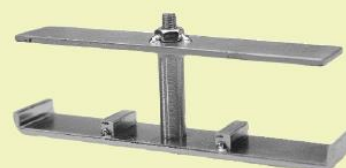
STAGE
TECHNOLOGY

STAGE PLATFORM BSC Light



LEGS CONNECTOR

Double and quadruple clamps (for 2 or 4 adjacent legs) are used to connect the legs of the stage platforms. The clamps are made of steel and their special construction sets precisely the distance between legs. The clamps fasten and stabilize the whole stage construction at the same time.

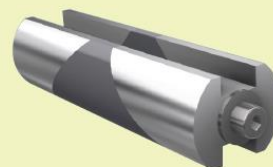


The offered system of stage platforms BSC Light and accessories was designed and introduced to production by Polish engineers – experienced specialists in the theatre and stage industry. Using our experience and observations of many platform systems, we have managed to create a product that focuses the best features of portable staging systems existing on the European market and at the same time maintains the available price combined with a very high quality.



QUICK COUPLERS - CONNECTOR OF FRAMES

The connection of the platform frames is realized by so-called quick couplings. The connection method was developed individually for stage platforms BSC Light and PS BSC. The fastening element is made of a specially designed aluminum profile. The frame connector is blocked by screwing it with a special built-in screw, so that a very stable connection it is created – between the frames of adjacent stage platforms.



TECHNICAL SPECIFICATIONS

MATERIAL		PLATE (TOP)		LOAD CAPACITY
aluminium: frame, quick couplers, corners; steel: stairs, clamps; wood: plate		12mm thick plywood, certified for fire resistance, plywood is waterproof and non-slip		600 kg/m ² (6 kN/m ²) – uniformly distributed
DIMENSIONS OF THE PLATFORM	WEIGHT	FRAME HEIGHT	LEG DIMENSIONS	STANDARD HEIGHTS
200x100cm	30 kg	8 cm	from 40x40 mm to 60x60 mm, pipe Ø 50mm	20, 40, 60, 80, 100, 120, 140, 160 cm

Suggested to store up to 20, one on top of another on a special transport trolley, which is 40 m² of a stage stored on a space of 2m².

STAGE PLATFORM BSC Light



We offer a wide range of additional equipment for our platforms: various types of surfaces, finishing elements, stairs, hand railings for stairs and stage, as well as products for storage and transport of the platforms..



ACCESSORIES



HANDRAIL FOR STAGE PLATFORMS

Handrail for stage and tribunes are manufactured from rectangular tubes with diameter of 40x20x2 mm, black powder coated, fixed to the platform frame within special mounting brackets.

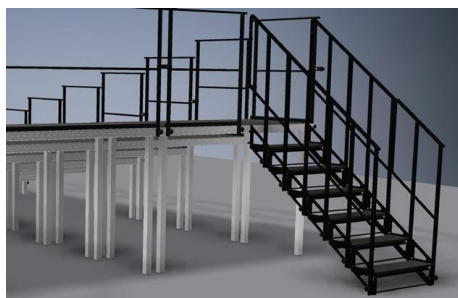
Standard length: 2 m, 1 m, 0,5 m.



MODULAR STAIR

Modular stairs made of wood and steel, enable safe entrance to the stage. Their modular system allows you to add or remove individual stair steps. The surface of the steps matches with the surface of the platforms from which the stage is built.

Standard dimensions: width of the single step: 93,5 cm, depth: 25 cm, height: 20 cm.



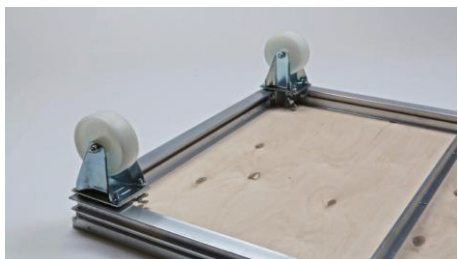
HANDRAILS FOR STAIRS

Handrails for stairs are manufactured from rectangular tubes with a diameter of 40x20x2 mm, black powder coated, fixed to stairs with special mounting brackets.



TRANSPORT TROLLEY

The transport trolley with a handle enables comfortable transport and storage of all types of platforms and accessories.



WHEELS FOR TRANSPORTING

Set of 4 transport wheels for storing and transporting up to 20 platforms. The transport wheels are fixed in the corners of the stage podium. This creates a kind of mobile platform on which other platforms are placed. Additional elements, such as legs, clamps, quick couplers are stored in the space between the tops of individual platforms.